

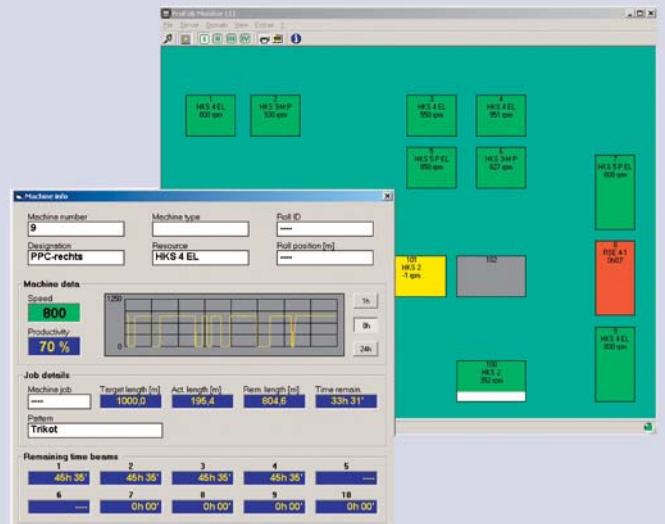
ProFab machinemanager

Production Process Monitoring: The Software Solution

In the textile industry, market globalization is leading to hard competition on price. The cuts in manpower input which are simultaneously taking place mean that automatization will be the key to maintaining long-term competitiveness and securing the future of the company. The latest generation of machines from world market leader Karl Mayer already implements network interfaces and is thus equipped for TEXION's Software ProFab machinemanager.

A New Resource in the Production Process

6,000 items of machine data per day not only provide information about what is currently happening in production, but also point to as yet unrealized optimization potential. TEXION's ProFab machinemanager provides a documentation and analysis tool designed especially to meet the needs of knitwear producers. Current production status is viewable at any time, enabling fast responses, for example, to machine standstills and thus achieving cost minimization. Moreover, the core operating data of each machine, such as RPM, finished design, and standstills, are automatically logged.



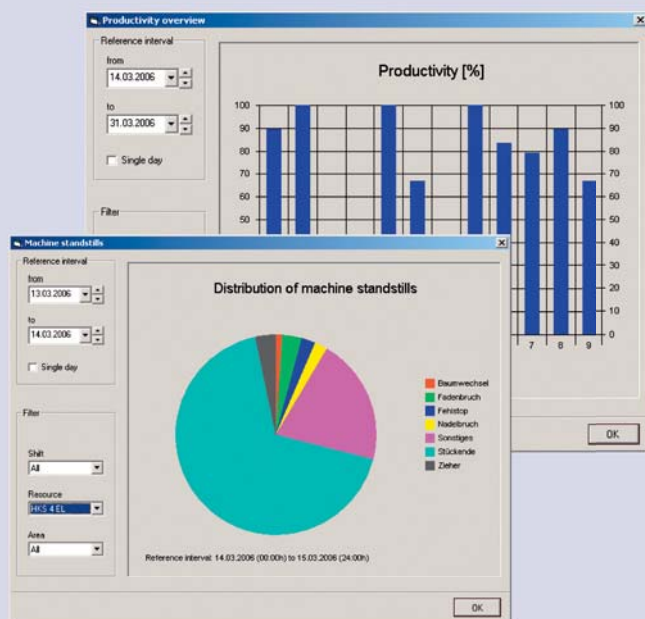
Risk Prevention is better than Cure

ProFab machinemanager is able to analyze and evaluate production data according to such criteria as efficiency, machine utilization, average RPM, and fault frequency. The overviews, protocols, and status reports that users are provided with enable fast identification and troubleshooting of errors. Data display can be selected from single shifts, days and also longer time periods. Shift or day-related protocols have a unified format and supply users in a preview with data about average RPM, productivity and number of standstills of all machines over the time span selected.

The main window provides an overview of RPM curves together with a listing of times and causes of standstills for any given machine selected.

On the basis of machine-related protocols, performance assessments for individual machines over a selected time span can be executed speedily and simply. Data from a single machine are viewable over a freely selectable time span. Sort filters can be used to generate protocols focussing on individual standstills of particular interest.

Users are able to assess the productivity and standstill times of individual machines via a user-friendly overview of all available protocols. This is the key to increasing efficiency in production.



Security of Investment: Flexibility

The open structure of ProFab network means that extensions to system functionality can be implemented without impacting other components. This ensures the security of investment for ProFab network. We will be happy to give you a presentation about how you can benefit from ProFab machinemanager and other ProFab network modules.

ProFab network

ProFab designmanager

- Direct transfer of design pattern data from atelier to machine (time-saving and security benefit)
- Design patterns fully protected against misuse (security benefit)
- Secure versioning of pattern designs (quality benefit)

ProFab machinemanager

- Overview of the status of all machines
- Detailed data relating to each machine
- Straightforward call-up of protocols and listings
- Key data (average RPM, productivity) available at any time
- Graphic display of RPM curves (monitor)
- Analysis of reasons for standstills (cause, time, remarks)

ProFab jobmanager

- Interface to all standard production planning systems
- Administration, planning and tracking of all production jobs
- Job progressing and production deadline monitoring
- Planning maximum machine productivity
- Quality control via detailed protocols