



TREND

COLLECTION

SS XVII

**STOLL**  
THE RIGHT WAY TO KNIT



BETWEEN

WORLDS

**STOLL**  
THE RIGHT WAY TO KNIT

# INSPIRATION

We are torn between the concurrence of technical progress in our private lives and the desire for naturalness and sustainability. On one hand, we enjoy electronic high-end products and on the other hand, we welcome an ecological way of life and seek for moments of leisure in an intact natural environment. Witness of this clash is apparent in James Cameron's blockbuster movie *Avatar*, where a highly sophisticated human society meets the spiritual strength of indigenous people.

This season, Stoll's Trend Collection Spring/Summer 2012 enters into this tension zone and navigates between worlds.

During the preliminary collection's research work, we got inspired by these native people and their spiritual strength, manual skills and natural resources. The counter pole, however, was achieved and symbolized by our hi-tech machines.

Aesthetic characteristics of tribal clothes like leather, fur, cotton and bast fibres have been partially morphed into modern materials. We have knitted leather, bast fibres and elastic polyurethane fibres along with multifilament yarns, fringe yarns, yarns with different gauges, coarse cords and extremely fine yarns. The diversified palette of materials stands for contrariety being present in both worlds.

In the process, we have interpreted the look of handicraft techniques such as macramé, patchwork and stitching with state-of-the-art Stoll technology. The results are open and net-veined structures, multi-layered knitted coats and multi gauges decorated with feathers and fringe applications. Graphical patterns refer to body drawings and fancy stitch optics.

The technical and aesthetic challenge of this collection was to work with something different, including some rather unconventional materials for the practice of knitting. A haptic sample enclosed in this edition gives evidence.

Go out of your way and chart new paths with regard to material selection - cross new frontiers and discover something extraordinary. Juggle and capitalize on the possibilities of the modern knitting machine - its performance is the standard by which progress between worlds can and will be measured.





1010304

CMS 830 C knit&wear - E 2,5.2

STOLL-knit and wear®

jersey top in 2-layer look, bottom part knitted  
with armholes folded to the top



1010415

CMS 822 HP - E 7.2

Fully Fashion shirt made up across the knitting direction with fringes and linked on 1x1 shoulder parts, drawstring collar and purl patterned hem, back side shown as front



1010409

CMS 822 HP - E 7.2

miniskirt made up across the knitting direction with fringes and purl patterned hem, back side shown as front





1010439

CMS 740 - E7.2

Fully Fashion pullover in 2-colour float and relief jacquard with French shoulder

1010408

CMS 530 HP - E 18

Fully Fashion wrap around cardigan with  
batwing sleeves in striped jersey structure  
with diagonal optic, sleeve and body knitted  
in one piece, back side shown as front





1010301

CMS 822 HP multi gauge - E 8.2

Fully Fashion wrap around skirt with 3 layers  
in striped jersey structure with diagonal optic,  
alternately turned inside out, different gauge  
optics by Power Tension Setting and number  
of threads



1010304

CMS 830 C knit&wear – E 2,5.2

STOLL-knit and wear®

jersey top in 2-layer look, bottom part knitted  
with armholes folded to the top

1010420

CMS 830 C – E 2,5.2

STOLL-applications®

skirt in 1x1 technique with 2-colour cross  
tubular jacquard and tape applications



1010445

CMS 340 TC - E 2,52

Fully Fashion slipover with deep  
V-neck and 2-layer intarsia stripes  
on pointelle mesh structure with  
pattern effect by slub yarn



1010317


CMS 830 C - E 2,5,2

Fully Fashion halter-neck bast dress with floats and pointelle structure in macramé look, backside with zigzag fancy stitch, dress knitted in one piece









1010349

CMS 740 - E 5.2

STOLL-multi gauges®

Fully Fashion hooded waistcoat in rib structure  
with intarsia fancy stitches, rib trim and lateral  
intarsia edges with floats

1010441

CMS 340 TC - E 2,5,2

striped Fully Fashion jersey pullover with  
separately knitted open loops made by gore  
technique



1010442  
CMS 340 TC - E 2,5.2  
striped Fully Fashion short-sleeved hooded  
pullover with intarsia stripe, 2-colour pointelle  
jacquard transfer structure



1010440

CMS 822 multi gauge - E 8.2

dress with knitted on draped intarsia tapes,  
partly knitted in stripes and 2-colour bird's  
eye jacquard





1010296  
CMS 830 C multi gauge - E 2,5,2  
Fully Fashion slipover with bulky mesh  
structure on fine jersey fabric





1010416  
CMS 740 - E 5.2  
STOLL-multi gauges®  
asymmetrical Fully Fashion dress with  
oneshoulder neckline, jersey float structure  
in linen weave look and lateral gored fringes  
inserts, dress knitted in one piece







1010292  
CMS 822 HP - E 8.2  
Fully Fashion jersey cape made up across  
the knitting direction with fringes, shaped by  
gore technique

1010293  
CMS 822 HP - E 8.2  
Fully Fashion pant in 2-colour tubular fabric,  
shaped by gore technique



1010413

CMS 740 knit&wear - E 7.2

STOLL-knit and wear®

jersey trousers with bonded zippers in intarsia  
slits, linked-off 1x1 elastic waistband and trousers  
legs reduced by 1x1 rib at calves

1010436

CMS 740 - E 7.2

short-sleeved pullover with intarsia square  
pattern in cross tubular jacquard transfer  
structure in 1x1 technique, rectangles partly  
opened



1010305

CMS 830 C knit&wear - E 2,5.2

STOLL-knit and wear®


striped pullover with pointelle structure, turned  
inside out





1010405  
CMS 530 HP - E 18  
Fully Fashion shirt with diagonal checked  
pattern in 3-colour striped jersey transfer  
structure with rib effect





1010356

CMS 740 - E 5.2

Fully Fashion strap dress in gore technique  
with asymmetrical hem, pointelle structure,  
fringes and wave bordures with ornamental  
stitches



1010410

CMS 530 HP multi gauge - E 7.2

STOLL-multi gauges®

STOLL-applications®

Fully Fashion jersey top with intarsia racking tapes, asymmetrical hem in the front and linked-off openings at the back

1010428

CMS 530 HP multi gauge - E 7.2

STOLL-multi gauges®

STOLL-applications®

necklace made of intarsia tapes in racking pattern





1010444

CMS 340 TC - E 2,5.2

Fully Fashion jersey slipover with intarsia  
patterning and float thread structure,  
shoulder parts in 2x1 rib shaped by gore  
technique



1010410

CMS 530 HP multi gauge - E 7.2

STOLL-multi gauges®

STOLL-applications®

Fully Fashion jersey top with intarsia racking  
tapes, asymmetrical hem in the front and  
linked-off openings at the back







1010302

CMS 530 HP multi gauge - E 7.2

STOLL-applications®

sleeveless dress in intarsia patchwork design  
with different structures, bordered with  
overlapping wave applications, hem shaped  
by gore technique

1010306

CMS 502 multi gauge – E 3,5,2  
sleeveless Fully Fashion jersey dress, front  
with weave look design, intarsia side parts  
with leather yarn in special float transfer  
structure, knitted in one piece





1010443

CMS 330 TC-T - E 7.2

Fully Fashion short-sleeved pullover with stripes and intarsia motifs in jersey cast-off structure and fake leather yoke







1010438  
CMS 740 - E 2,5.2  
jersey dress in V-line, lateral intarsia areas  
with float thread structure, floats created by  
manually cast-off stitches after knitting

1010438

CMS 740 - E 2,5.2

jersey dress in V-line, lateral intarsia areas  
with float thread structure, floats created by  
manually cast-off stitches after knitting





1010435

CMS 340 TC - E 2,5.2

Fully Fashion waistcoat with 2-colour intarsia  
patterning, float thread structure and  
armhole edges with half tubular 1x1 ribs



1010304

CMS 830 C knit&wear – E 2,5.2

STOLL-knit and wear®

jersey top in 2-layer look, bottom part knitted  
with armholes folded to the top



1010297

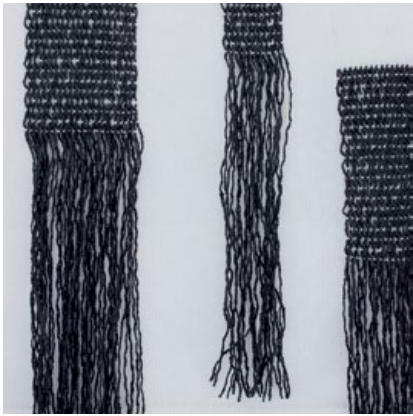
CMS 740 – E 5.2

Fully Fashion skirt in rib structure with intarsia  
fancy stitches and fringes, Y-trimming for  
front zipper and bind-off stretch waistband



1010329  
CMS 822 HP multi gauge - E 3,5,2  
waistcoat in 2-colour jersey transfer float  
structure, turned inside out, floats created  
by manually cast-off stitches after knitting,  
knitted in one piece





1010409 / P.08



1010439 / P.09



1010420 / P.12



1010445 / P.13



1010317 / P.14



1010441 / P.18



1010442 / P.19



1010296 / P.22



1010416 / P.23



# STITCHES



1010292 / P.24-25



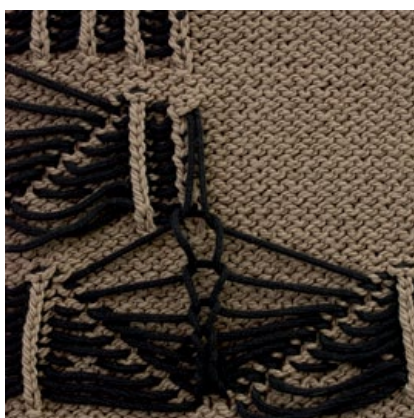
1010436 / P.27



1010405 / P.30



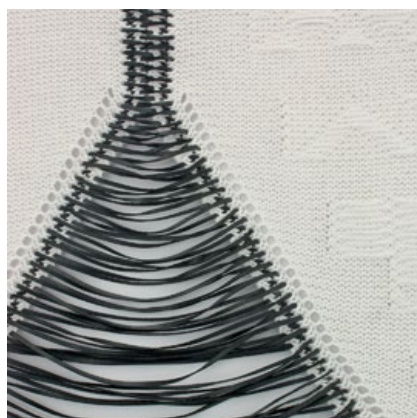
1010356 / P.31



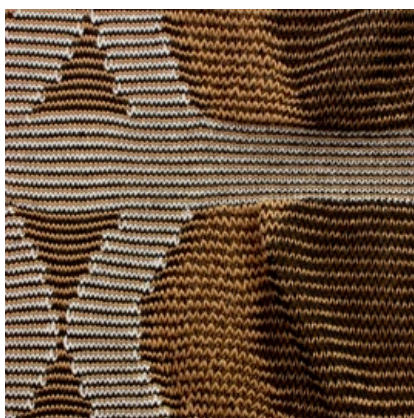
1010444 / P.33



1010302 / P.36-37



1010306 / P.38



1010443 / P.39



1010435 / P.44

P. NO. YARN DETAILS

7	1010304	Filpucci: Essenza, Nm 44 (76% VI, 24% PA) Luigi Boldrini: Bat, Nm 10 (50% PU, 50% PES)
8	1010415	Igea: Foglia, Nm 24 (58% VI, 42% CO) C.T.F.: Kidde, Nm 3,7 (56% WO, 31% PU, 13% PA)
	1010409	Igea: Foglia, Nm 24 (58% VI, 42% CO) C.T.F.: Kidde, Nm 3,7 (56% WO, 31% PU, 13% PA)
9	1010439	Igea: Foglia, Nm 24 (58% VI, 42% CO)
10	1010408	Filpucci: Essenza, Nm 44 (76% VI, 24% PA)
11	1010301	Lineapiù: Noir, Nm 70 (82% CO, 18% PA)
12	1010304	Filpucci: Essenza, Nm 44 (76% VI, 24% PA) Luigi Boldrini: Bat, Nm 10 (50% PU, 50% PES)
	1010420	BE.MI.VA.: Park, Nm 1,1; Nm 2,3 (76% CO, 24% PA) Lineapiù (filclass): Sandal, Nm 7 (100% PC)
13	1010445	Lineapiù (filclass): Tiffany, Nm 2,8 (52% CO, 25% VI, 23% LI) Luigi Boldrini: Bat, Nm 10 (50% PU, 50% PES) Igea: Foglia, Nm 24 (58% VI, 42% CO) BE.MI.VA.: Park, Nm 2,3 (76% CO, 24% PA)
14	1010317	Luigi Boldrini: Raffia, Nm 2,5 (100% VI) BE.MI.VA.: Cayenne, Nm 1,3 (100% CO) C.T.F.: Kidde, Nm 3,7 (56% WO, 31% PU, 13% PA) Fashion Mill: Aria, Nm 28,5 (61% VI, 26% LI, 13% PA)
17	1010349	Fashion Mill: Aria, Nm 28,5 (61% VI, 26% LI, 13% PA) C.T.F.: Kidde, Nm 3,7 (56% WO, 31% PU, 13% PA)
18	1010441	BE.MI.VA.: Cayenne, Nm 1,3 (100% CO)
19	1010442	Igea: Foglia, Nm 24 (58% VI, 42% CO) BE.MI.VA.: Cayenne, Nm 1,3 (100% CO) Lineapiù (filclass): Tiffany, Nm 2,8 (52% CO, 25% VI, 23% LI) Luigi Boldrini: Bat, Nm 10 (50% PU, 50% PES)
20	1010440	Lineapiù: Noir, Nm 70 (82% CO, 18% PA) Igea: Foglia, Nm 24 (58% VI, 42% CO)
22	1010296	BE.MI.VA.: Park, Nm 1,1 (76% CO, 24% PA) Fashion Mill: Aria, Nm 28,5 (61% VI, 26% LI, 13% PA)
23	1010416	Igea: Foglia, Nm 24 (58% VI, 42% CO) Lineapiù (filclass): Tiffany, Nm 2,8 (52% CO, 25% VI, 23% LI) BE.MI.VA.: Park, Nm 2,3 (76% CO, 24% PA)
24	1010292	Fashion Mill: Aria, Nm 28,5 (61% VI, 26% LI, 13% PA) Schaefer Garne: Fresia, Nm 60/2 (50% VI, 50% PC)
	1010293	Fashion Mill: Aria, Nm 28,5 (61% VI, 26% LI, 13% PA) Lineapiù: Cream, Nm 28 (95% VI, 5% PBT)
26	1010413	Thessa: Star, Nm 17 (50% CO, 50% CMD)
27	1010436	Igea: Foglia, Nm 24 (58% VI, 42% CO)

# YARN DETAILS

P. NO.	YARN DETAILS
28 1010305	BE.MI.VA.: Cayenne, Nm 1,3 (100% CO) Luigi Boldrini: Bat, Nm 10 (50% PU, 50% PES) Filpucci: Essenza, Nm 44 (76% VI, 24% PA)
30 1010405	Filpucci: Riflesso, Nm 40 (80% CO, 20% PA) Schaefer Garne: Fresia, Nm 60/2 (50% VI, 50% PC) Zegna Baruffa: Sand, Nm 90/3 (100% CO)
31 1010356	Lineapiù (filclass): Tiffany, Nm 2,8 (52% CO, 25% VI, 23% LI) Fashion Mill: Aria, Nm 28,5 (61% VI, 26% LI, 13% PA) BE.MI.VA.: Park, Nm 2,3 (76% CO, 24% PA)
32 1010410	Igea: Foglia, Nm 24 (58% VI, 42% CO) Fashion Mill: Aria, Nm 28,5 (61% VI, 26% LI, 13% PA)
1010428	Igea: Foglia, Nm 24 (58% VI, 42% CO) Fashion Mill: Aria, Nm 28,5 (61% VI, 26% LI, 13% PA)
33 1010444	BE.MI.VA.: Park, Nm 2,3 (76% CO, 24% PA) BE.MI.VA.: Cayenne, Nm 1,3 (100% CO) Fashion Mill: Aria, Nm 28,5 (61% VI, 26% LI, 13% PA)
34 1010410	Igea: Foglia, Nm 24 (58% VI, 42% CO) Fashion Mill: Aria, Nm 28,5 (61% VI, 26% LI, 13% PA)
37 1010302	Thessa: Star, Nm 17 (50% CO, 50% CMD)
38 1010306	Lineapiù (filclass): Tiffany, Nm 2,8 (52% CO, 25% VI, 23% LI) ISOLife: Leather String, 3mm x 1mm (100% Leather)
39 1010443	Lineapiù (filclass): Sandal, Nm 7 (100% PC) Schaefer Garne: Fresia, Nm 60/2 (50% VI, 50% PC) Fashion Mill: Aria, Nm 28,5 (61% VI, 26% LI, 13% PA)
41 1010438	BE.MI.VA.: Cayenne, Nm 1,3 (100% CO) Luigi Boldrini: Bat, Nm 10 (50% PU, 50% PES) Lineapiù (filclass): Tiffany, Nm 2,8 (52% CO, 25% VI, 23% LI)
42 1010438	BE.MI.VA.: Cayenne, Nm 1,3 (100% CO) Luigi Boldrini: Bat, Nm 10 (50% PU, 50% PES) Lineapiù (filclass): Tiffany, Nm 2,8 (52% CO, 25% VI, 23% LI)
44 1010435	BE.MI.VA.: Cayenne, Nm 1,3 (100% CO) Luigi Boldrini: Bat, Nm 10 (50% PU, 50% PES)
45 1010304	Filpucci: Essenza, Nm 44 (76% VI, 24% PA) Luigi Boldrini: Bat, Nm 10 (50% PU, 50% PES)
1010297	Fashion Mill: Aria, Nm 28,5 (61% VI, 26% LI, 13% PA) C.T.F.: Kidde, Nm 3,7 (56% WO, 31% PU, 13% PA)
46 1010329	BE.MI.VA.: Park, Nm 2,3 (76% CO, 24% PA) Filmar: Sinai, Nm 4,3 (100% CO)

## YARN MANUFACTURERS

### BE.MIVA.

Via Mugellese 115 – 50010 Capalle (FI) – Italy  
T +39 055898261 / F +39 055898084  
bemiva@bemiva.it / www.bemiva.it

### C.T.F.

Via Labriola 260 – 59013 Montemurlo (PO) – Italy  
T +39 0574556280 / F +39 0574720393  
ctf@compagniatessile.it

### DIVÈ S.P.A.

Via Papa Giovanni XXIII 94 – 13882 Vergnasco-Cerrione (BI) – Italy  
T +39 0152583057 / F +39 0152583900  
dive@filatidive.it / www.filatidive.it

### EMILCOTONI S.P.A.

Viale dell'Industria 12 – 29100 Piacenza (PC) – Italy  
T +39 0523606913 / F +39 0523608054  
info@emilcotoni.it / www.emilcotoni.it

### FASHION MILL S.R.L.

Via Udine 104 – 59013 Montemurlo (PO) – Italy  
T +39 057468280 / F +39 0574682625  
info@fashionmill.it

### FILPUCCI S.P.A.

Via Dei Tigli 41 – 50010 Capalle (FI) – Italy  
T +39 05589871 / F +39 0558969382  
filpucci@filpucci.it / www.filpucci.it

### GRIGNASCO 1894 S.R.L.

Via Dante Alighieri 2 – 28075 Grignasco (NO) – Italy  
T +39 01634101 / F +39 0163410333  
marketing@filgri.it

### IGEA S.P.A.

Via Pollative 119 – 59100 Prato (FI) – Italy  
T +39 057451811 / F +39 0574621749  
igea@igeayarn.it / www.igeayarn.it

### ISOLife

244 West 39th Street – 1101 Floor – New York, NY 10018 – USA

### LINEAPIÙ S.P.A. (FILCLASS)

Via Gobetti 12 – 50010 Capalle (FI) – Italy  
T +39 05589561 / F +39 0558956568  
gruppolineapiu@lineapiu.com / www.lineapiu.com

### LUIGI BOLDRINI S.R.L.

Via E. Codignola 4 – 50018 Scandicci (FI) – Italy  
T +39 055755220 / F +39 055757079  
info@luigiboldrini.com / www.luigiboldrini.com

### SCHAEFER GARNE GROUP

Alter Postweg 101 – 86159 Augsburg – Germany  
T +49 (0)821590010 / F +49 (0)8215900111  
www.schaefer-garne.com

### W. ZIMMERMANN GMBH & CO. KG,

Riederstraße 7 – 88171 Weiler-Simmerberg – Germany  
T +49 (0)838792120 / F +49 (0)8387921242  
info@zimsi.com / www.zimsi.com

### ZEGNA BARUFFA – LANE BORGOSIESA S.P.A.

Via Milano 160 – 13856 Vigliano Biellese (BI) – Italy  
T +39 0157001 / F +39 015700252  
baruffa@baruffa.com / www.baruffa.com

### FRAMIS ITALIA S.P.A.

Via dell' Agricoltura 9/15 – Gaggiano (MI) – Italy  
T +39 02908051 / F +39 0290843055  
info@framis.it / www.framis.it

### NTT New Textile Technologies GmbH

Stollenau 10 – 72336 Balingen – Germany  
T +49 (0)7433391480 / F +49 (0)7433391481  
info@ntt-int.de / www.ntt-int.de

# ADDRESSES

## STOLL HEADQUARTERS

### GERMANY

H. Stoll GmbH & Co. KG  
Stollweg 1 – 72760 Reutlingen  
T +49 (0)71213130 / F +49 (0)7121313110  
contact@stoll.com / www.stoll.com

## STOLL FASHION & TECHNOLOGY

### STOLL FASHION & TECHNOLOGY GERMANY

H. Stoll GmbH & Co. KG  
Stollweg 1 – 72760 Reutlingen  
T +49 (0)71213130 / F +49 (0)7121313426  
contact@stoll.com / www.stoll.com

### STOLL FASHION & TECHNOLOGY INTERNATIONAL CENTER

Building 2, No. 800, Shenfu Road  
Xin Zhuang Industrial Park  
Shanghai – China 201108  
T +86 2154428188 / F +86 2154427117  
stollshanghai@stoll.com.cn / www.stoll.com.cn

### STOLL FASHION & TECHNOLOGY CENTER NEW YORK

250 West 39th Street (Ground Floor)  
New York – NY 10018  
T +1 2123983869 / F +1 2129217639  
info@stollftny.com / www.stollftny.com

## STOLL BRANCHES & AGENCIES

### FRANCE

Stoll France  
85-87, Avenue Henri Barbusse – 92140 Clamart  
T +33 141088383 / F +33 141088500  
stollfrance@wanadoo.fr

### ITALY

Stoll Italia srl  
Via Dei Maniscalchi 9/A – 41012 Carpi (MO)  
T +39 059651899 / F +39 059651870  
stollitalia@stoll.it

### USA – CANADA

Stoll America Knitting Machinery, Inc.  
250 West 39th Street (Ground Floor)  
New York – NY 10018  
T +1 2123983869 / F +1 2129217639  
info@stollftny.com

### JAPAN

Stoll Japan Co. Ltd.  
Aquacity Shibaura – 4-16-23 Shibaura  
Minato-Ku – Tokyo 108-0023 – Japan  
T +81 337693690 / F +81 337693694  
info@stolljapan.jp

### INDIA

Stoll India Pvt. Ltd.  
C-25 – Sector 63  
201301 Noida – Uttar Pradesh  
T +91 1204690850 / F +91 1204690851  
contact@stoll-india.com

### CHINA – HONGKONG

TAIWAN – THAILAND – VIETNAM  
Chemtax (Stoll) Company Limited  
6/F, Goldsland Building  
22-26 Minden Avenue – Tsim Sha Tsui – Kowloon  
Hong Kong  
T +852 23686269 / F +852 23687500  
stoll@chemtax.com

Editorial Department: Fashion & Technology  
Art Direction & Graphic Design: SSAWstudio.com  
Photography: rafaelkroetz.de  
Hair & Make Up: raheltaeubert.com  
Models: Valeriya Kabluka / VIVA, Joachim Gram / VIVA  
© 2010 Stoll GmbH & Co. KG





[www.stoll.com](http://www.stoll.com)