

COMPACT CLASS & MULTI-GAUGE CLASS

Gauges in every variation

CMS 502 HP / CMS 520 HP / CMS 530 HP / CMS 520 C / CMS 530 T / CMS 822 HP
CMS 502 HP multi gauge / CMS 520 HP multi gauge / CMS 530 HP multi gauge
CMS 822 HP multi gauge / CMS 933 HP multi gauge



STOLL

KNIT AHEAD

STOLL

KNIT AHEAD

GERMANY
H. Stoll GmbH & Co. KG, Stollweg 1, D-72760 Reutlingen, Phone: +49-7121-313-0
Fax: +49-7121-313-110, E-mail: contact@stoll.com, www.STOLL.com

FRANCE
Stoll France, 85-87, Avenue Henri Barbusse, F-92140 Clamart
Phone: +33-1-4108-8383, Fax: +33-1-4108-8500, E-mail: stollfrance@wanadoo.fr

ITALY
Stoll Italia srl., Via Dei Maniscalchi, 9/A, 41012 Carpi (MO)
Phone: +39-059-651899, Fax: +39-059-651870, E-mail: stollitalia@stoll.it

**USA,
CANADA**
Stoll America Knitting Machinery, Inc., 250 West 39th Street, 1st Floor
New York, NY 10018 - USA, Phone: +1-212-398-3869, Fax: +1-212-921-7639
E-mail: info@stollamerica.com

JAPAN
Stoll Japan Co. Ltd., Minato-Ku, Shibaura 4-16-23
Aquacity Shibaura, JP-Tokyo 108-0023
Phone: +81-3-3769-3690, Fax: +81-3-3769-3694, E-mail: info@stolljapan.jp

INDIA
Stoll India Pvt. Ptd., C-25, Sector 63, 201 301 Noida, Uttar Pradesh
Phone: +91-120-4690850/2406368, Fax: +91-120-4690851
E-mail: contact@stoll-india.com

**CHINA, HONG
KONG, TAIWAN,
THAILAND,
VIETNAM**
Chemtax (Stoll) Company Limited, 6/FI. Goldsland Building
22 - 26 Minden Avenue, Tsim Sha Tsui, Kowloon, Hong Kong
Phone: +852-2368-6269, Fax: +852-2368-7500, E-mail: stoll@chemtax.com

www.STOLL.com

IF EVERYTHING MUST BE POSSIBLE, THEN THERE'S ONLY ONE OPTION: OUR STOLL COMPACT CLASS.

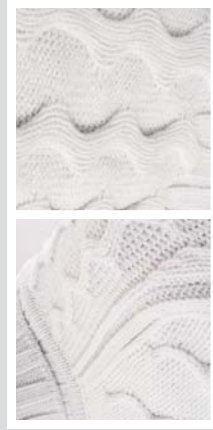
A CMS of the compact class is above all one thing: typically STOLL! It is extremely efficient for Fully Fashion, as you can select two, three or four systems as required.

With a working width of 45" or 50", it's a real credit to its class name. For unusual sizes there's a tandem machine with 84" that you can also use to knit Fully Fashion pieces in 2 x 42" tandem mode. Coarse stitches for a high-quality hand-knit look? There's also a suitable CMS to meet this need. One model of the compact class is even equipped with split additional beds with transfer elements – for extremely productive narrowing cycles with fabrics knitted with all needles. Of course, all machines are equipped with the Fully Fashion features of yarn clamping and cutting device and take-down comb. All this makes the models of the compact class the "best-sellers" for Fully Fashion.

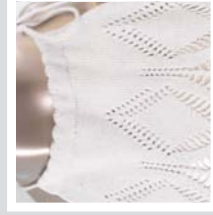
Like every CMS, the models of the compact class are also characterized by their versatility. Where you would otherwise require expensive special machines, every CMS provides absolutely comparable results in no time.

Except for the entry model of our compact class, the CMS 502 HP, simple needle exchange, extremely fast gauge conversion, or (and we're particularly proud of this) our intarsia yarn feeders enable you to further increase the utilization of your STOLL-machine pool. Intarsia knitting is especially simple with our machines, as every CMS* is prepared for it as standard. In practice this means: simply slide on our optionally available intarsia yarn feeders and you can immediately knit even the most complicated patterns with precision. From classic argyle styles to avant-garde fantasy patterns – you can easily knit any pattern you desire.

* Excluding CMS 502 HP.



Fully Fashion pullover with saddle shoulder. STOLL-making effects* in double layer structure with transfer.



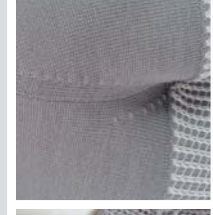
Fully Fashion top in poinelle structure without empty rows, knitted on tubular start and neck with float stitch structure.



Intarsia rib dress with separate tubular starts for each color with 28 (30) intarsia yarn carriers, top part with smooth transition from the ribs into straps, indicated V-neck by ribs without intarsia binding.



Fully Fashion intarsia pullover with round neck and sleeve narrowings.



FLEXIBILITY YOU CAN GRASP. HERE ARE THE RESULTS.

In the future, flexibility is the recipe for success. Trends change at a breathtaking rate, the requirements for quality and creativity are constantly more demanding and the time factor is becoming increasingly important. It's a good thing you can prepare ideally for the future with a CMS from our multi-gauge class utilizing the patented STOLL-multi gauges® knitting technology.

Coarse knitwear today, fine tomorrow? No problem! With a flat knitting machine from STOLL you are ideally equipped for requirements of this kind. With one and the same machine you will knit fabrics in various gauges without needle exchange or gauge conversion: STOLL-flexible gauge! Your advantages: high utilization of the machine pool, great investment security, fast reaction to fashion trends and large order quantities.

And various gauges in one and the same fabric, horizontally in one knitting row or vertically arranged! With STOLL machines you realize fascinating pattern effects, primarily due to the interaction of coarse and fine, transparent and opaque areas. With STOLL-applications® you also eliminate a large part of the make-up process, e.g. with knitted-on trimmings, pockets and collar solutions. And during this different gauges can even be realized within the applications. There are also numerous other "little helpers" for even more flexibility, e.g. an easy-to-modify comb gap, knock-over bit with multiple positions for a knock-over wire, various stitch lengths via PTS, the ASCON yarn length measuring unit and many more that make your life easier.



STOLL-multi gauges® intarsia lady's sweater, with twice turned intarsia tape in 1 x 1 technique, V-neck and French shoulder.



STOLL-multi gauges® intarsia cardigan in double layer jacquard structure with knitted-on collar. Pockets knitted through STOLL-applications® technique.



STOLL-devoiré knit®, STOLL-multi gauges® sleeveless Fully Fashion dress with fligree motif around the neckline, knitted with all needles, skirt part with rolled hem in plush and tubular structure with fligree motifs, knitted with all needles and 1 x 1 technique, top and skirt part combined with 1 x 1 tubular drawcord.



Two-color cable in two different gauges, knitted with one and the same machine.

IF WE HAD TO DESCRIBE EFFICIENCY WITH ANOTHER TERM, IT WOULD BE “STOLL COMPACT CLASS”.

Compact machines made by STOLL are among the best-selling electronic knitting machines in the world.

This is primarily due to their great efficiency for Fully Fashion knitting. You knit extremely economically with two, three or even four systems, enabling considerably shorter knitting times to be realized even when knitting the most complex garments. In addition, short equipping and set-up times with a huge pattern variety

are also achieved, e.g. with STOLL-multiflex* fabric takedown system. Thanks to the gauge range from ultra-coarse to super-fine, you can immediately react to any fashion trend.

And the trend-setting CMS technology offers even more advantages. Shorter knitting times thanks to Power-RCR, an extremely rapid carriage return, excellent working conditions due to the low construction height and the high op-

erating convenience, e.g. with STOLL-touchcontrol® and USB port as standard; space-saving due to the compact design. These features are further enhanced by a flawless stitch appearance and high operating safety thanks to perfect yarn guidance. The high-quality design and the sophisticated STOLL technology that, for example, are reflected in the electronic maintenance- and wear-free needle selection system, or the proven CMS needle

ensure minimal downtimes.

WHATEVER THE FUTURE HOLDS IN STORE – WITH OUR MULTI-GAUGE CLASS WE ALREADY KNIT AHEAD TODAY.

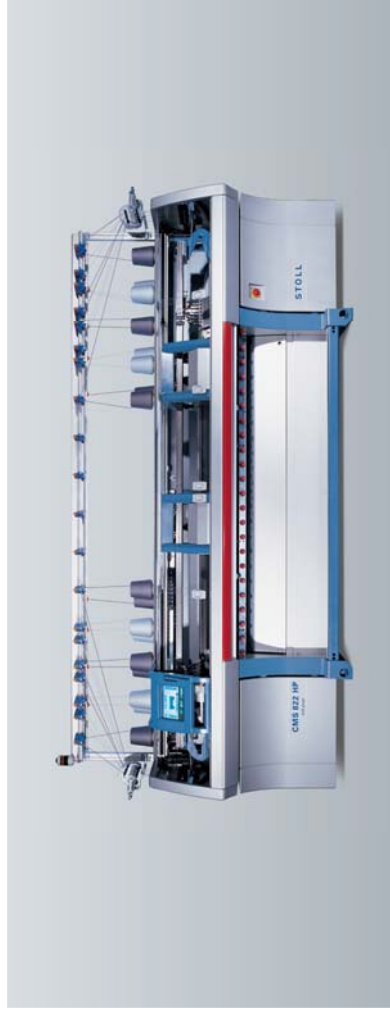
With the STOLL-multi gauges® knitting technology you realize all basic knitting modes, as well as jacquard, structures (aran, cables etc.) and intarsia.

Particularly varied fabrics are obtained by combining the different knitting modes. And it's especially easy to knit intarsia patterns with STOLL machines*. Just slide on the intarsia yarn feeders and knit unusual patterns in no time – without expensive special machines or time-consuming conversions.

The ergonomic design simplifies

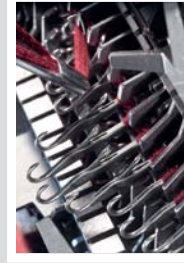
working and the perfect yarn guidance ensures a flawless stitch appearance and high operating safety. Many details and STOLL-touchcontrol® make operation easier, and perfect finishing minimizes downtimes. With the Productivity Enhancement Pack the knitting processes are optimised so the running time of a pattern is considerable reduced. All in all those are exceptional results.

* Does not apply to CMS 802 HP multi gauge.



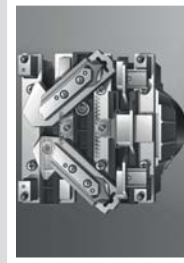
Yarn feed

The active yarn clamp unit, slack tensioner and permanent thread brake ensure an optimum interaction of yarn and needle – even at maximum loads.



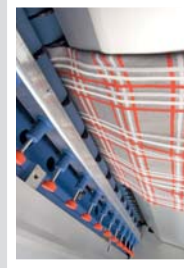
CMS needle

The palefine spring-transfer needle with spring-loaded latch is characterized by low needle wear and a high level of safety during opening, closing, and transferring.



Stitch length control with Flexible Stitch and PTS

Several tensions in one stitch row, quickly adjustable with PTS (Power Tension Setting).



STOLL-multiflex* fabric takedown system**

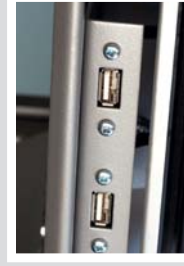
With main take-down, upper take-down and take-down comb. Freely programmable and adjustable roller segments.



Intarsia yarn feeders

By simply sliding on the intarsia yarn feeders, almost any CMS machine immediately becomes a perfect intarsia machine.

** CMS 530 HP multi gauge, CMS 530 HP multi gauge and CMS 822 HP multi gauge only. *** Image not valid for CMS 502 HP machines.



USB port

Thanks to the easy-to-reach USB port, you can quickly and easily transfer important data to your CMS***.

CMS 520 HP

The compact solution with two systems.

With a working width of 50"/127 cm and two systems, the economical CMS 520 HP is suitable for all orders in the Fully Fashion sector. Your advantage: a broad range of patterns with extremely short equipping and set-up times.



CMS 520 HP MULTI GAUGE

The multifunctional solution.

The CMS 520 HP multi gauge with gauges from E 3,5.2 to E 8.2 and 50"/127 cm working width can do anything a model of the multi-gauge class can do. It features compact dimensions and is extremely flexible in production.

CMS 530 HP

The bestseller with three systems.

With a gauge range from E 5 to E 18, a working width of 50"/127 cm and three systems, the CMS 530 HP knits even complex patterns quickly and even more productively. Our most flexible machine can knit all kind of techniques whether intarsia, structures, plating or devoré. One major plus during bind-off: 4" racking as "standard".



CMS 550 MULTI GAUGE

The versatile solution.

The range of gauges from E 2,5.2 to E 8.2, the working width from 50"/127 cm and the three systems enable you to realize even the most demanding patterns extremely economically with this machine.



CMS 502 HP

The compact solution for every day.

With its working width of 45"/114 cm, the two systems and the gauges E 5, 7, 10, 12, 14, 16, 18, it masters everyday Fully Fashion orders effortlessly.

CMS 502 HP MULTI GAUGE

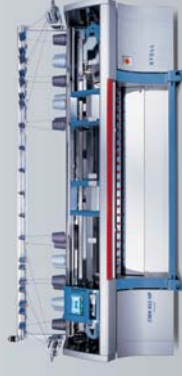
Most compact and flexible.

Our smallest among the multi-gauge machines can be used with total flexibility due to its compact dimensions, two systems and the gauges E 2,5.2, 3,5.2, 6.2, 7.2 and 8.2.

CMS 822 HP

The record-breaker.

With the CMS 822 HP in tandem operation, you can simultaneously knit two Fully Fashion pieces up to 2 x 42"/2 x 107 cm in size. The coupled carriages and four systems enable an enormous working width of up to 84"/213 cm, allowing even the largest sizes to be produced.



CMS 822 HP MULTI GAUGE

The economic marvel.

The CMS 822 HP multi gauge tandem machine knits two pieces simultaneously with a working width of 2 x 42"/2 x 107 cm, and with coupled carriages up to 84"/213 cm are achievable. The gauge spectrum ranges from E 2,5.2 to E 8.2.

CMS 933 HP MULTI GAUGE

The XXL machine with 6 systems.

Having a working width of 96"/244 cm or 2 x 46"/117 cm with 2 x 3 systems, the CMS 933 HP multi gauge is the most productive of the multi-gauge machines. Gauges from E 3,5.2 to E 8.2 give you all the freedom you need for pattern design.



CMS 530 T

The narrowing specialist.

The two split additional beds of the CMS 530 T make narrowing even more productive. And the transfer element between the two upper beds eliminates empty carriage strokes.



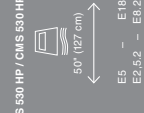
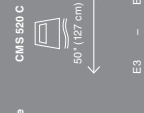
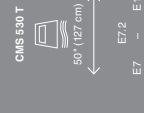




CMS 520 C

The machine for coarse knitwear.

With the CMS 520 C, you can knit gauges from E 3 to E 4. From ultra-coarse stitches to a high-quality hand-knit appearance.



	CMS 502 HP / CMS 502 HP multi gauge	CMS 520 HP / CMS 520 HP multi gauge	CMS 530 HP / CMS 530 HP multi gauge	CMS 520 C	CMS 530 T	CMS 822 HP / CMS 822 HP multi gauge	CMS 933 HP multi gauge	
	 45" (114 cm) E5 - E18 E2,5.2 - E8.2	 50" (127 cm) E5 - E18 E3,5.2 - E8.2	 50" (127 cm) E5 - E18 E2,5.2 - E8.2	 50" (127 cm) E3 - E4	 50" (127 cm) E7 - E14	 2 x 42" (107 cm) E5 - E18 E2,5.2 - E8.2	 2 x 46" (117 cm) 1 x 96" (244 cm) E3,5.2 - E8.2	
Knitting Unit	1 x 2	1 x 2	1 x 3	1 x 2	1 x 3	2 x 2	2 x 3	
Carriages / knitting systems	2	2	3	3	3	4	6	
Electronic wear-free selection systems with 2 selection points	6	6	8	6	8	12	16	
Dynamic tension setting with step motors. Extremely quick adjustments of stitch tension with PTS (Power Tension Setting)	•	•	•	•	•	•	•	
Drive / Racking								
Main drive; programmable speed; variable stroke; Power-PCR-System (Rapid Carriage Return); flexible speed adjustment using starting bar; CFC-protection system (Carriage Force Control)	•	•	•	•	•	•	•	
Max. knitting speed (m/s) [02]	1.2	1.2	1.2	1.0	1.2	1.2	1.2	
Racking course max. 4*, programmable racking speed	•	•	•	•	•	•	•	
Racking of additional beds (left / right; max. 2*)	-	-	-	-	-	-	-	
Needle bed								
Nominal width max. working width, in inches (cm)	45 (114)	50 (127)	50 (127)	50 (127)	50 (127)	84 (213)	96 (244)	
in tandem version max. inches (cm)	-	-	-	-	-	2 x 42 (107)	2 x 46 (117)	
Gauges	E5 - 18 [04] E2,5.2 - 8.2 [21] E5 - 8, E10 - 18 [08] E2,5.2 - 5.2; E6.2 - 8.2 [25]	E5 - 18 [05] E2,5.2 - 8.2 [23] E5 - 8, E10 - 18 [08] E2,5.2 - 5.2; E6.2 - 8.2 [27]	E5 - 18 [06] E2,5.2 - 8.2 [23] E5 - 8, E10 - 18 [10] E2,5.2 - 5.2; E6.2 - 8.2 [28]	E3 - 4 [06] E2,5.2 - 8.2 [23] E5 - 8, E10 - 18 [08] E2,5.2 - 5.2; E6.2 - 8.2 [27]	E7 - 14 E7.2 E12 14	E7 - 14 E7.2 E12 14	E5 - 18 [09] E2,5.2 - 8.2 [24] E5 - 8, E10 - 18 [10] E2,5.2 - 5.2; E6.2 - 8.2 [28]	E3,5.2 - 8.2 [24] E5 - 8, E10 - 18 [10] E2,5.2 - 5.2; E6.2 - 8.2 [29]
Gauge conversion								
Fixed knockover bits	•	•	•	•	•	•	•	
Movable hold-down sinkers on both needle beds	•	•	•	•	•	•	•	
Pelamine spring-transfer needle with spring-loaded latch	•	•	•	•	•	•	•	
Needle detector	•	•	•	•	•	•	•	
Needle exchange [12]	•	•	•	•	•	•	•	
8 thread clamping and cutting devices, left / right	-	-	-	-	-	-	-	
Illuminated working space	•	•	•	•	•	•	•	
Shock stop motion, front / rear	•	•	•	•	•	•	•	
Central lubrication of needle bed elements and carriage side bars	•	•	•	•	•	•	•	
Additional beds								
2 split additional beds with transfer elements	-	-	-	-	-	-	-	
Nominal width max. working width, in inches (cm)	-	-	-	-	-	-	-	
2 external transfer systems	-	-	-	-	-	-	-	
Shock stop motion, left / right	-	-	-	-	-	-	-	
Yarn guide								
Yarn control units	14 [12] [15] 14 [31]	16 [14] [12] [15] 16 [14] [31]	20 [14] [16] 24 [120] [18] [35]	24	E7 - 8 [18] E10 - 14 [14] E7.2 [26]	32 [26] [20] [15] 32 [26] [20] [33]	36 [30] [26] [34]	
8 active thread clamps, left / right	•	•	•	•	•	•	•	
Thread sensors with scale and following permanent thread brake, left / right	•	•	•	•	•	•	•	
Thread detector on carriage yarn guidance, left / right	•	•	•	•	•	•	•	
Yarn leader rail (yarn carriage yarn guidance)	•	•	•	•	•	•	•	
Intrasy yarn leader	•	•	•	•	•	•	•	
Plating kit consisting of plating yarn feeder and bobbin holder	•	•	•	•	•	•	•	
Push device	•	•	•	•	•	•	•	
Holders for bobbins	-	-	-	-	-	-	-	
Additional holders for bobbins, mounted on the rear side of the machine	-	-	-	-	-	-	-	
Yarn feed unit								
Friction feed wheel, 8 tracks each left / right	•	•	•	•	•	•	•	
Storage feed wheel [18]	•	•	•	•	•	•	•	
ASCON®, automatic stitch control, 8 measurement points, left / right [19]	•	•	•	•	•	•	•	
Fabric take-down system								
Main take-down	•	•	•	•	•	•	•	
Upper take-down	•	•	•	•	•	•	•	
Control system Data processing								
Memory (main computer)	256 MB	256 MB	256 MB	256 MB	256 MB	256 MB	256 MB	
2 USB (touchscreen; removable display slide with touchscreen; color display 600 x 600 pixels)	•	•	•	•	•	•	•	
2 USB (back-up; correct continuation of the knitting process after power failure)	•	•	•	•	•	•	•	
Safety devices								
Fully enclosed working area	•	•	•	•	•	•	•	
Machine complies with EC regulations (CE label)	•	•	•	•	•	•	•	
Machine status lamp	•	•	•	•	•	•	•	
Cleaning device								
Suction device with turbine; with cleaning brush on suction tube	•	•	•	•	•	•	•	
Dimensions Weights								
Length; unpacked in the case on pallet, approx. in mm	2370 2644 2644	2700 3288 3288	2700 3288 3288	2700 3288 3288	2700 3288 3288	4025 4488 4488	5100 5460 5460	
Width; unpacked in the case on pallet, approx. in mm	909 1150 1102	909 1150 1102	909 1150 1102	909 1150 1102	909 1150 1102	1062 1468 1420	1062 1468 1420	
Height; unpacked in the case on pallet, approx. in mm	2050 1938 1720	2050 1938 1810	2050 1938 1810	2050 1938 1810	2050 1938 1810	2050 2098 1810	2050 2098 1810	
Weight; net gross with case gross with pallet, approx. in kg	1028 1458 1148	1220 1770 1410	1240 1790 1430	1240 1790 1430	1290 1840 1480	1670 2430 1930	2060 3190 2540	
Connection value (kW) [20]	1.7	2.0	2.0	2.0	2.3	2.6	3.0	
• Standard equipment	•	•	•	•	•	•	•	
○ Optional equipment	○	○	○	○	○	○	○	

[03] Rear needle bed, 150 141 141 148	[12] With needle gauge: 4 5 6 7 8	[13] Options on the gauge and working depends always on the gauge and working conditions. Conversion possible to CMS 520 HP	[14] Conversion possible to CMS 530 HP	[15] Conversion possible to CMS 822 HP	[16] Conversion possible to CMS 933 HP	[17] For gauges E2,5.2 - 3.5.2 + 5.2 6.2 + 7.2 8.2	[18] For gauges E2,5.2 - 3.5.2 + 5.2 6.2 + 7.2 8.2
[04] Machine gauge E7	[14] Machine gauge E7	[16] For gauge E5 - 8 10 and higher	[17] For gauge E3,5.2 + 5.2 6.2 and higher	[18] For gauge E3,5.2 + 5.2 6.2 and higher	[19] For gauge E3,5.2 + 5.2 6.2 and higher	[20] Illuminated fibre collection chamber	[21] Illuminated fibre collection chamber
[05] Gauge E3 5.2 7 8 10 12 14 16 18	[15] Gauge E3 5.2 7 8 10 12 14 16 18	[17] For gauge E5 - 8 10 and higher	[18] For gauge E3,5.2 + 5.2 6.2 and higher	[19] For gauge E3,5.2 + 5.2 6.2 and higher	[20] Illuminated fibre collection chamber	[21] Illuminated fibre collection chamber	[22] Illuminated fibre collection chamber
[06] CMS 502 HP multi gauge	[16] Machine gauge E8	[18] For gauge E5 - 8 10 and higher	[19] For gauge E3,5.2 + 5.2 6.2 and higher	[20] Illuminated fibre collection chamber	[21] Illuminated fibre collection chamber	[22] Illuminated fibre collection chamber	[23] Illuminated fibre collection chamber
[07] CMS 520 HP multi gauge	[17] Machine gauge E9	[19] For gauge E5 - 8 10 and higher	[20] Illuminated fibre collection chamber	[21] Illuminated fibre collection chamber	[22] Illuminated fibre collection chamber	[23] Illuminated fibre collection chamber	[24] Illuminated fibre collection chamber
[08] CMS 530 HP multi gauge	[18] Machine gauge E10	[20] Illuminated fibre collection chamber	[21] Illuminated fibre collection chamber	[22] Illuminated fibre collection chamber	[23] Illuminated fibre collection chamber	[24] Illuminated fibre collection chamber	[25] Illuminated fibre collection chamber
[09] CMS 822 HP multi gauge	[19] Machine gauge E11	[21] Illuminated fibre collection chamber	[22] Illuminated fibre collection chamber	[23] Illuminated fibre collection chamber	[24] Illuminated fibre collection chamber	[25] Illuminated fibre collection chamber	[26] Illuminated fibre collection chamber
[10] CMS 933 HP multi gauge	[20] Machine gauge E12	[22] Illuminated fibre collection chamber	[23] Illuminated fibre collection chamber	[24] Illuminated fibre collection chamber	[25] Illuminated fibre collection chamber	[26] Illuminated fibre collection chamber	[27] Illuminated fibre collection chamber
[11] Adjustable and visible on holding down depth	[21] Machine gauge E13	[23] Illuminated fibre collection chamber	[24] Illuminated fibre collection chamber	[25] Illuminated fibre collection chamber	[26] Illuminated fibre collection chamber	[27] Illuminated fibre collection chamber	[28] Illuminated fibre collection chamber
[12] Depends on yarn and pattern structure	[22] Machine gauge E14	[24] Illuminated fibre collection chamber	[25] Illuminated fibre collection chamber	[26] Illuminated fibre collection chamber	[27] Illuminated fibre collection chamber	[28] Illuminated fibre collection chamber	[29] Illuminated fibre collection chamber
[13] Adjustable and visible on holding down depth	[23] Machine gauge E15	[25] Illuminated fibre collection chamber	[26] Illuminated fibre collection chamber	[27] Illuminated fibre collection chamber	[28] Illuminated fibre collection chamber	[29] Illuminated fibre collection chamber	[30] Illuminated fibre collection chamber
[14] Adjustable and visible on holding down depth	[24] Machine gauge E16	[26] Illuminated fibre collection chamber	[27] Illuminated fibre collection chamber	[28] Illuminated fibre collection chamber	[29] Illuminated fibre collection chamber	[30] Illuminated fibre collection chamber	[31] Illuminated fibre collection chamber
[15] Adjustable and visible on holding down depth	[25] Machine gauge E17	[27] Illuminated fibre collection chamber	[28] Illuminated fibre collection chamber	[29] Illuminated fibre collection chamber	[30] Illuminated fibre collection chamber	[31] Illuminated fibre collection chamber	[32] Illuminated fibre collection chamber
[16] Adjustable and visible on holding down depth	[26] Machine gauge E18	[28] Illuminated fibre collection chamber	[29] Illuminated fibre collection chamber	[30] Illuminated fibre collection chamber	[31] Illuminated fibre collection chamber	[32] Illuminated fibre collection chamber	[33] Illuminated fibre collection chamber
[17] Adjustable and visible on holding down depth	[27] Machine gauge E19	[29] Illuminated fibre collection chamber	[30] Illuminated fibre collection chamber	[31] Illuminated fibre collection chamber	[32] Illuminated fibre collection chamber	[33] Illuminated fibre collection chamber	[34] Illuminated fibre collection chamber
[18] Adjustable and visible on holding down depth	[28] Machine gauge E20	[30] Illuminated fibre collection chamber	[31] Illuminated fibre collection chamber	[32] Illuminated fibre collection chamber	[33] Illuminated fibre collection chamber	[34] Illuminated fibre collection chamber	[35] Illuminated fibre collection chamber
[19] Adjustable and visible on holding down depth	[29] Machine gauge E21	[31] Illuminated fibre collection chamber	[32] Illuminated fibre collection chamber	[33] Illuminated fibre collection chamber	[34] Illuminated fibre collection chamber	[35] Illuminated fibre collection chamber	[36] Illuminated fibre collection chamber
[20] Adjustable and visible on holding down depth	[30] Machine gauge E22	[32] Illuminated fibre collection chamber	[33] Illuminated fibre collection chamber	[34] Illuminated fibre collection chamber	[35] Illuminated fibre collection chamber	[36] Illuminated fibre collection chamber	[37] Illuminated fibre collection chamber
[21] Adjustable and visible on holding down depth	[31] Machine gauge E23	[33] Illuminated fibre collection chamber	[34] Illuminated fibre collection chamber	[35] Illuminated fibre collection chamber	[36] Illuminated fibre collection chamber	[37] Illuminated fibre collection chamber	[38] Illuminated fibre collection chamber
[22] Adjustable and visible on holding down depth	[32] Machine gauge E24	[34] Illuminated fibre collection chamber	[35] Illuminated fibre collection chamber	[36] Illuminated fibre collection chamber	[37] Illuminated fibre collection chamber	[38] Illuminated fibre collection chamber	[39] Illuminated fibre collection chamber
[23] Adjustable and visible on holding down depth	[33] Machine gauge E25	[35] Illuminated fibre collection chamber	[36] Illuminated fibre collection chamber	[37] Illuminated fibre collection chamber	[38] Illuminated fibre collection chamber	[39] Illuminated fibre collection chamber	[40] Illuminated fibre collection chamber
[24] Adjustable and visible on holding down depth	[34] Machine gauge E26	[36] Illuminated fibre collection chamber	[37] Illuminated fibre collection chamber	[38] Illuminated fibre collection chamber	[39] Illuminated fibre collection chamber	[40] Illuminated fibre collection chamber	[41] Illuminated fibre collection chamber
[25] Adjustable and visible on holding down depth	[35] Machine gauge E27	[37] Illuminated fibre collection chamber	[38] Illuminated fibre collection chamber	[39] Illuminated fibre collection chamber	[40] Illuminated fibre collection chamber	[41] Illuminated fibre collection chamber	[42] Illuminated fibre collection chamber
[26] Adjustable and visible on holding down depth	[36] Machine gauge E28	[38] Illuminated fibre collection chamber	[39] Illuminated fibre collection chamber	[40] Illuminated fibre collection chamber	[41] Illuminated fibre collection chamber	[42] Illuminated fibre collection chamber	[43] Illuminated fibre collection chamber
[27] Adjustable and visible on holding down depth	[37] Machine gauge E29	[39] Illuminated fibre collection chamber	[40] Illuminated fibre collection chamber	[41] Illuminated fibre collection chamber	[42] Illuminated fibre collection chamber	[43] Illuminated fibre collection chamber	[44] Illuminated fibre collection chamber
[28] Adjustable and visible on holding down depth	[38] Machine gauge E30	[40] Illuminated fibre collection chamber	[41] Illuminated fibre collection chamber	[42] Illuminated fibre collection chamber	[43] Illuminated fibre collection chamber	[44] Illuminated fibre collection chamber	[45] Illuminated fibre collection chamber
[29] Adjustable and visible on holding down depth	[39] Machine gauge E31	[41] Illuminated fibre collection chamber	[42] Illuminated fibre collection chamber	[43] Illuminated fibre collection chamber	[44] Illuminated fibre collection chamber	[45] Illuminated fibre collection chamber	[46] Illuminated fibre collection chamber
[30] Adjustable and visible on holding down depth	[40] Machine gauge E32	[42] Illuminated fibre collection chamber	[43] Illuminated fibre collection chamber	[44] Illuminated fibre collection chamber	[45] Illuminated fibre collection chamber	[46] Illuminated fibre collection chamber	[47] Illuminated fibre collection chamber
[31] Adjustable and visible on holding down depth	[41] Machine gauge E33	[43] Illuminated fibre collection chamber	[44] Illuminated fibre collection chamber	[45] Illuminated fibre collection chamber	[46] Illuminated fibre collection chamber	[47] Illuminated fibre collection chamber	[48] Illuminated fibre collection chamber
[32] Adjustable and visible on holding down depth	[42] Machine gauge E34	[44] Illuminated fibre collection chamber	[45] Illuminated fibre collection chamber	[46] Illuminated fibre collection chamber	[47] Illuminated fibre collection chamber	[48] Illuminated fibre collection chamber	[49] Illuminated fibre collection chamber
[33] Adjustable and visible on holding down depth	[43] Machine gauge E35	[45] Illuminated fibre collection chamber	[46] Illuminated fibre collection chamber	[47] Illuminated fibre collection chamber	[48] Illuminated fibre collection chamber	[49] Illuminated fibre collection chamber	[50] Illuminated fibre collection chamber
[34] Adjustable and visible on holding down depth	[44] Machine gauge E36	[46] Illuminated fibre collection chamber	[47] Illuminated fibre collection chamber	[48] Illuminated fibre collection chamber	[49] Illuminated fibre collection chamber	[50] Illuminated fibre collection chamber	[51] Illuminated fibre collection chamber
[35] Adjustable and visible on holding down depth	[45] Machine gauge E37	[47] Illuminated fibre collection chamber	[48] Illuminated fibre collection chamber	[49] Illuminated fibre collection chamber	[50] Illuminated fibre collection chamber	[51] Illuminated fibre collection chamber	[52] Illuminated fibre collection chamber
[36] Adjustable and visible on holding down depth	[46] Machine gauge E38	[48] Illuminated fibre collection chamber	[49] Illuminated fibre collection chamber	[50] Illuminated fibre collection chamber	[51] Illuminated fibre collection chamber	[52] Illuminated fibre collection chamber	[53] Illuminated fibre collection chamber
[37] Adjustable and visible on holding down depth	[47] Machine gauge E39	[49] Illuminated fibre collection chamber	[50] Illuminated fibre collection chamber	[51] Illuminated fibre collection chamber	[52] Illuminated fibre collection chamber	[53] Illuminated fibre collection chamber	[54] Illuminated fibre collection chamber
[38] Adjustable and visible on holding down depth	[48] Machine gauge E40	[50] Illuminated fibre collection chamber	[51] Illuminated fibre collection chamber	[52] Illuminated fibre collection chamber	[53] Illuminated fibre collection chamber	[54] Illuminated fibre collection chamber	[55] Illuminated fibre collection chamber
[39] Adjustable and visible on holding down depth	[49] Machine gauge E41	[51] Illuminated fibre collection chamber	[52] Illuminated fibre collection chamber	[53] Illuminated fibre collection chamber	[54] Illuminated fibre collection chamber	[55] Illuminated fibre collection chamber	[56] Illuminated fibre collection chamber
[40] Adjustable and visible on holding down depth	[50] Machine gauge E42	[52] Illuminated fibre collection chamber	[53] Illuminated fibre collection chamber	[54] Illuminated fibre collection chamber	[55] Illuminated fibre collection chamber	[56] Illuminated fibre collection chamber	[57] Illuminated fibre collection chamber
[41] Adjustable and visible on holding down depth	[51] Machine gauge E43	[53] Illuminated fibre collection chamber	[54] Illuminated fibre collection chamber	[55] Illuminated fibre collection chamber	[56] Illuminated fibre collection chamber	[57] Illuminated fibre collection chamber	[58] Illuminated fibre collection chamber
[42] Adjustable and visible on holding down depth	[52] Machine gauge E44	[54] Illuminated fibre collection chamber	[55] Illuminated fibre collection chamber	[56] Illuminated fibre collection chamber	[57] Illuminated fibre collection chamber	[58] Illuminated fibre collection chamber	[59] Illuminated fibre collection chamber
[43] Adjustable and visible on holding down depth	[53] Machine gauge E45	[55] Illuminated fibre collection chamber	[56] Illuminated fibre collection chamber	[57] Illuminated fibre collection chamber	[58] Illuminated fibre collection chamber	[59] Illuminated fibre collection chamber	[60] Illuminated fibre collection chamber
[44] Adjustable and visible on holding down depth	[54] Machine gauge E46	[56] Illuminated fibre collection chamber	[57] Illuminated fibre collection chamber	[58] Illuminated fibre collection chamber	[59] Illuminated fibre collection chamber	[60] Illuminated fibre collection chamber	[61] Illuminated fibre collection chamber
[45] Adjustable and visible on holding down depth	[55] Machine gauge E47	[57] Illuminated fibre collection chamber	[58] Illuminated fibre collection chamber	[59] Illuminated fibre collection chamber	[60] Illuminated fibre collection chamber	[61] Illuminated fibre collection chamber	[62] Illuminated fibre collection chamber
[46] Adjustable and visible on holding down depth	[56] Machine gauge E48	[58] Illuminated fibre collection chamber	[59] Illuminated fibre collection chamber	[60] Illuminated fibre collection chamber	[61] Illuminated fibre collection chamber	[62] Illuminated fibre collection chamber	[63] Illuminated fibre collection chamber
[47] Adjustable and visible on holding down depth	[57] Machine gauge E49	[59] Illuminated fibre collection chamber	[60] Illuminated fibre collection chamber	[61] Illuminated fibre collection chamber	[62] Illuminated fibre collection chamber	[63] Illuminated fibre collection chamber	[64] Illuminated fibre collection chamber
[48] Adjustable and visible on holding down depth	[58] Machine gauge E50	[60] Illuminated fibre collection chamber	[61] Illuminated fibre collection chamber	[62] Illuminated fibre collection chamber	[63] Illuminated fibre collection chamber	[64] Illuminated fibre collection chamber	[65] Illuminated fibre collection chamber
[49] Adjustable and visible on holding down depth	[59] Machine gauge E51	[61] Illuminated fibre collection chamber	[62] Illuminated fibre collection chamber	[63] Illuminated fibre collection chamber	[64] Illuminated fibre collection chamber	[65] Illuminated fibre collection chamber	[66] Illuminated fibre collection chamber
[50] Adjustable and visible on holding down depth	[60] Machine gauge E52	[62] Illuminated fibre collection chamber	[63] Illuminated fibre collection chamber	[64] Illuminated fibre collection chamber	[65] Illuminated fibre collection chamber	[66] Illuminated fibre collection chamber	[67] Illuminated fibre collection chamber
[51] Adjustable and visible on holding down depth	[61] Machine gauge E53	[63] Illuminated fibre collection chamber	[64] Illuminated fibre collection chamber	[65] Illuminated fibre collection chamber	[66] Illuminated fibre collection chamber	[67] Illuminated fibre collection chamber	[68] Illuminated fibre