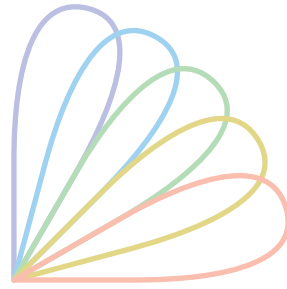


ProCad simulace



Through its machine simulation, this software provides you with a picture of how your lace design will actually look. Designs can be displayed in photo quality on-screen or printed as hardcopy. The complex effects of Jacquard and Multibar threads is made visible, and the influence of Jacquard ground effects clear to see. Modifications can be made fast. In fact, the development process is now fully independent of the availability of yarns and production machines.

User-friendly Interface

The program includes an interface which is simple to understand and easy to use.

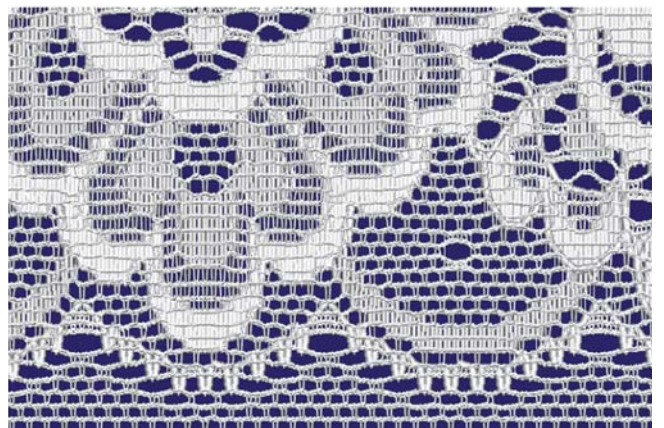
The pattern calculated or loaded is displayed in the large survey window. You are guided through the functions and applications of the program by graphic icons on the margin of the screen.

Additionally you can chose whether you wish to operate in inches or centimeters.

Adapted Displays

The calculated pattern first appears on-screen as a complete image. You can analyze the finer structures by using the hotkey-controlled zoom functions.

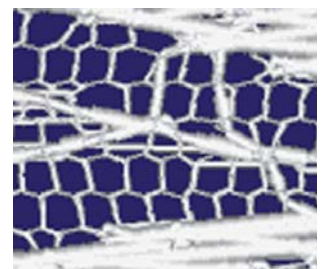
Multibar and Jacquardtronic® Lace Simulation



Fall Plate Patterns

Exact simulation of yarn behavior and machine properties allows the calculation of fall plate patterns.

This includes taking into account the lapping direction relative to the movement of the ground bars, as well as "swell out" of the yarns in zones where they are not fixed by the ground floating yarn.



Hexenet Patterns

Multibar patterns not including Jacquard are standardly calculated using a loop net ground. However, if the pattern header includes a tulle repeat, the simulation automatically switches to the appropriate tulle ground.

Calculation Basis

Graphic representation of lace is based on the following data:

- Chain link data
- Jacquard data
- Set-out
- Yarn properties
- Gauge and quality of finished article

Numerous Design Options

You can modify lace designs using a wide range of design options. For example, you can determine how many courses are necessary for yarn clipping. Or the maximum swell out floating yarn of fall plate yarns.

Thread Types

Border threads, filling threads, shadow threads, shiners, pillars, Jacquard: all threads can be added separately. The shine for the shiners is also available!

Color Scheme

Through assignment of color shade, brightness and saturation for each individual type of thread you can bring color into your lace. Simulated laces can be individually colored, also at the post-calculation stage. For a clearer reproduction both on paper and on-screen you can also define a color for the background.

Photo quality Reproduction

Both on-screen display and printed hardcopy have an incredibly realistic photo quality.

Hardcopy can be used, for example, as copy for customer approval ahead of any actual production, and can be archived in a pattern folder.

Universal Availability of Pictures

You can file all pictures to the archives as a TIFF file, from where they can be called up on-screen at any time. You can also export pictures to external programs as required.

Technical Information

System requirements

Graphic PC workstation or notebook
RAM \geq 1 GB

Operation

Mouse or tablet and keyboard



ProCad simulace is a stand-alone element of the software package ProCad. ProCad provides tools for professional creativity in Atelier technology. The individual programs have been designed for the various stages of pattern development. These programs are your aids right through the entire development and data management process. ProCad thus offers you a complete solution in Atelier technology.

Info and Support

Up-to-the-minute info relating to all ProCad software is available to you at all times via our Internet pages (<http://www.texion.eu>). You are also welcome to contact us by post, phone or fax. We will be happy to deal with your questions and enquiries.

TEXION
Software Solutions

TEXION Software Solutions
Rotter Bruch 26a
52068 Aachen, Germany
Phone +49 241-475757-0
Fax +49 241-475757-29
info@texion.eu
www.texion.eu



EAT GmbH The DesignScope Company
Industriering Ost 64
47906 Kempen, Germany
Phone +49 2152-2007-0
Fax +49 2152-519986
www.DesignScopeCompany.com