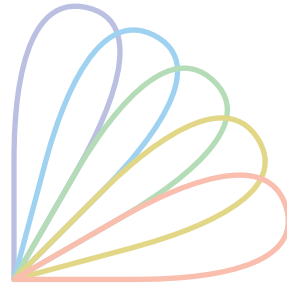


ProCad velours



The versatile tool ProCad velours will enable you to save yourself a whole lot of hard work while developing your patterns. Space for designer creativity is the key to this development. The tool provides the springboard for the realization of your ideas, shown effectively and convincingly in the display.

Development of Pile Patterns

The demands made on a design program for developing pile patterns can be very wide-ranging. They may include the need to

- create a new design by adding a new yarn thread-in to an existing pattern notation from another pattern.
- create a new design by adding a new pattern notation to an existing yarn thread-in from another pattern.
- re-create an existing design by color scheme modification.

ProCad velours can be used to realize your ideas, using convincingly easy-to-operate functions.

Free Design

You are completely free in your choice of design, thread-in and pattern notation. You can modify parts of patterns and transfer over parts of existing patterns.

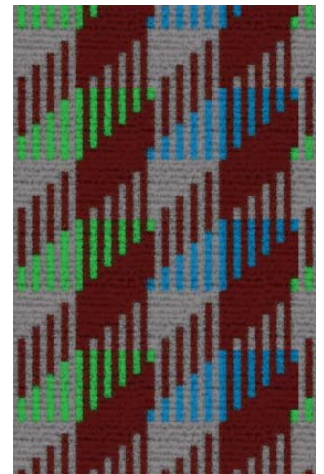
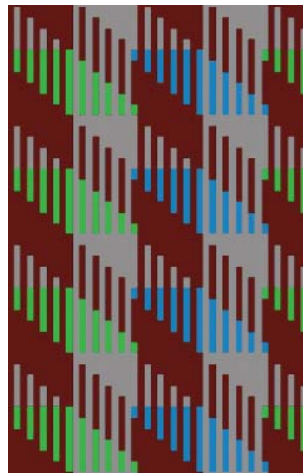
Extensive Choice of Yarn Types

Up to 64 yarn types are simultaneously available to you.

Individual Color Scheme

The color shade of all yarns used in your pattern can be individually and steplessly modified.

Development and Simulation of Velours Patterns



Online Checking

You are able to graphically modify pattern notations or enter chain links numerically. The calculation algorithms included show you how the changes affect your pattern in real-time.

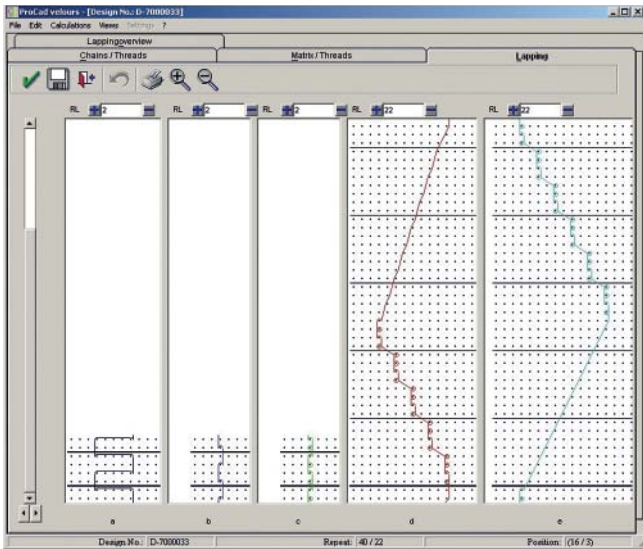
Simulation

The color effects and striation in a pattern are essential evaluation criteria for the designer. To be able to see the final look of a fabric ahead of actual production is of very great significance for effective development.

ProCad velours allows you to see your pattern both on-screen and hardcopy in photo-quality detail. Sophisticated calculation and knowledge relating to the complex processes involved in pile formation allow calculation and display of the material.

Wide Range of Machines

When created, each new design is assigned to a certain type of machine. The wide variety of machines supported by the software ranges from the KS x, KS x EL, KS x P, RD x DPLM to the KSJP. A simple configuration menu allows the user to extend the list of machines. The type of machine assigned defines the pattern characteristics for subsequent processing.



Technical Information

System requirements

Graphic PC workstation or notebook
RAM \geq 1 GB

Machines supported

- KS x
- KS x P
- KSJP
- KS x EL
- RD x DPLM

Access to Production Data

All important production data remain available simply by calling them up. These relevant parameters include machine width, production width, gauge, RPM and fabric take-off. Archiving also includes data relating to raw material and finished products, as well as the actual rate of production – basis for a detailed report and important source of information for future charges.

Extensive Pattern Documentation

The range of documentation options is extensive. This documentation provides you with a check on ongoing development and allows you to evaluate your material ahead of production. Color hardcopy of the material image can serve as approval copy for customers and can be included in an archived sample folder.

Hardcopy options include:

- List of chain links
- Yarn thread-in
- Protocol
- List of material
- Text page for remarks
(e.g. relating to machine set-up)
- Color picture of material
- Color picture of pattern notation
- Simulation in photo quality



ProCad velours is a stand-alone element of the software package ProCad. ProCad provides tools for professional creativity in Atelier technology. The individual programs have been designed for the various stages of pattern development. These programs are your aids right through the entire development and data management process. ProCad thus offers you a complete solution in Atelier technology.

Info and Support

Up-to-the-minute info relating to all ProCad software is available to you at all times via our Internet pages (<http://www.texion.eu>). You are also welcome to contact us by post, phone or fax. We will be happy to deal with your questions and enquiries.

TEXION
Software Solutions

TEXION Software Solutions
Rotter Bruch 26a
52068 Aachen, Germany
Phone +49 241-475757-0
Fax +49 241-475757-29
info@texion.eu
www.texion.eu



EAT GmbH The DesignScope Company
Industriering Ost 64
47906 Kempen, Germany
Phone +49 2152-2007-0
Fax +49 2152-519986
www.DesignScopeCompany.com