

ProFab jobmanager

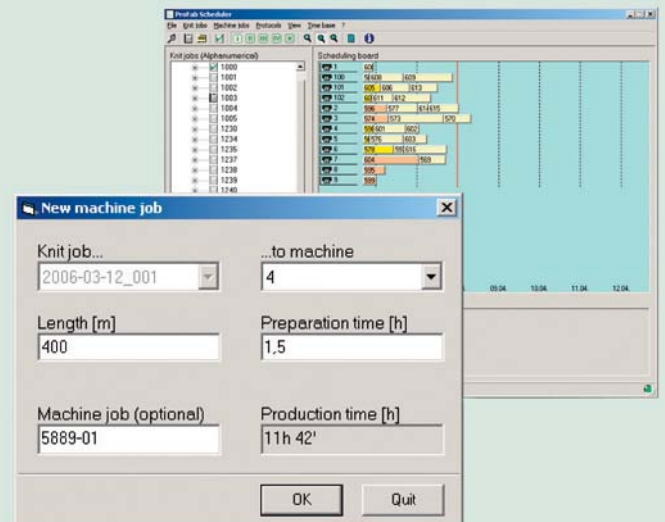
Optimized Production Planning: The Software Solution

44% higher productivity since 1995 coupled with a radical cut in manpower input. How can companies meet the challenges of tomorrow in terms of production planning? Process automation and optimization is the key.

Processes Optimized – Productivity Increased

Central control and full deadline and quality control monitoring of all production jobs with a view to achieving maximum machine utilization: TEXION's ProFab jobmanager places these targets within reach.

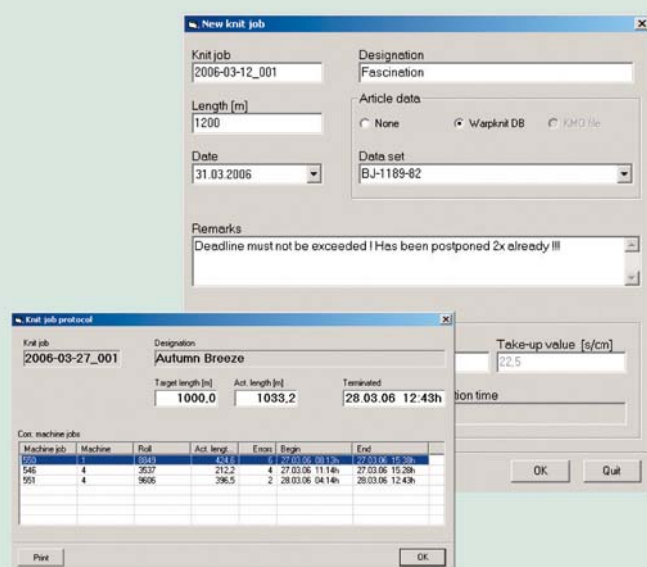
Production job data are entered centrally or imported from the existing planning system. Data about current job status are fed back to the system. Production planners are kept supplied with fully updated data from the machines. Users are provided with an ongoing online overview of the status of current jobs and machine utilization!



Article and/or design pattern data can be sent along with the jobs, thus eliminating the necessity of requesting these manually. This radically reduces the occurrence of production errors.

Upon completion of a job, a range of protocols can be generated identifying the roll of finished goods on which the job is contained, its exact position and any fault locations. Job protocols can be printed out and delivered along with the finished product. This ensures transparency of production process up to delivery to the customer.

ProFab jobmanager thus provides full production job tracking, from the purchase of the yarn right through to delivery of the packed and labeled goods.



Security of Investment: Flexibility

The open structure of ProFab network means that extensions to system functionality can be implemented without impacting other components. This ensures the security of investment for ProFab network. We will be happy to give you a presentation about how you can benefit from ProFab jobmanager and other ProFab network modules.

ProFab network

ProFab designmanager

- Direct transfer of design pattern data from atelier to machine (time-saving and security benefit)
- Design patterns fully protected against misuse (security benefit)
- Secure versioning of pattern designs (quality benefit)

ProFab machinemanager

- Overview of the status of all machines
- Detailed data relating to each machine
- Straightforward call-up of protocols and listings
- Key data (average RPM, productivity) available at any time
- Graphic display of RPM curves (monitor)
- Analysis of reasons for standstills (cause, time, remarks)

ProFab jobmanager

- Interface to all standard production planning systems
- Administration, planning and tracking of all production jobs
- Job progressing and production deadline monitoring
- Planning maximum machine productivity
- Quality control via detailed protocols