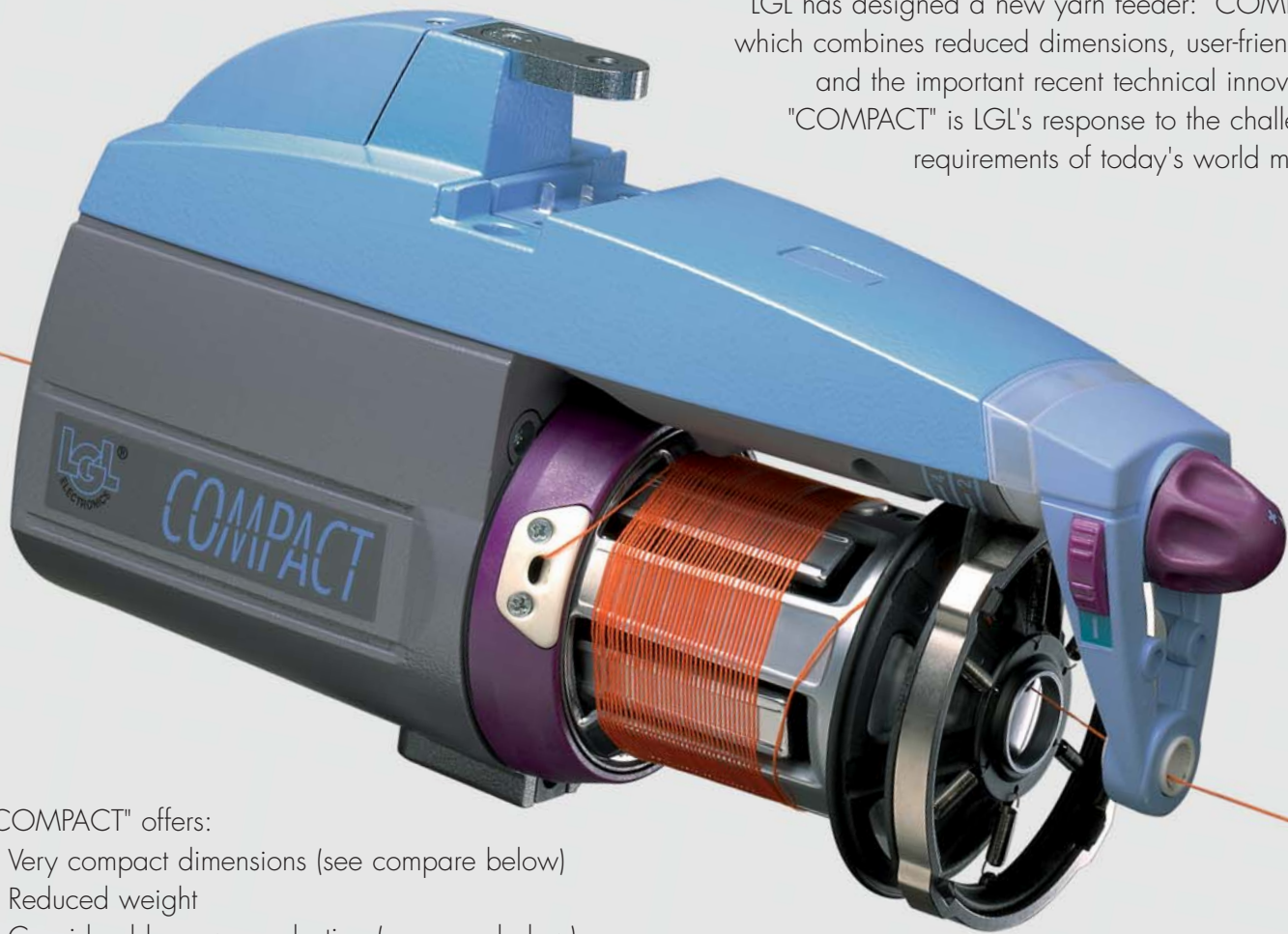


COMPACT

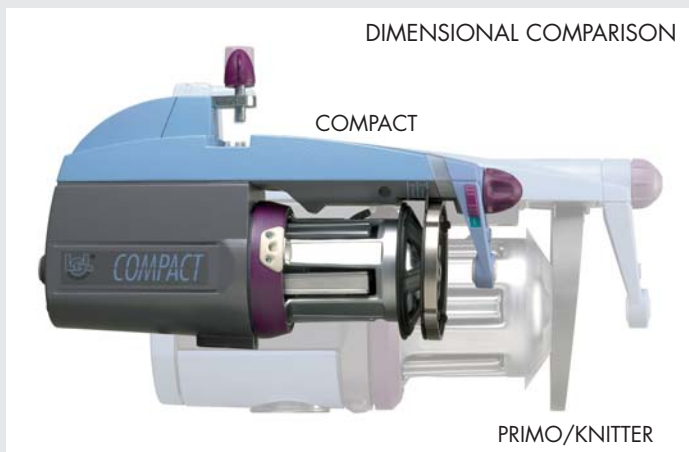
LGL has designed a new yarn feeder: "COMPACT", which combines reduced dimensions, user-friendliness and the important recent technical innovations. "COMPACT" is LGL's response to the challenging requirements of today's world markets.



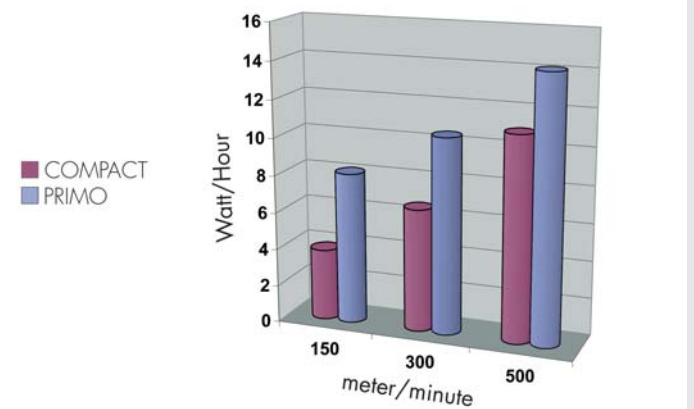
"COMPACT" offers:

- Very compact dimensions (see compare below)
 - Reduced weight
 - Considerable power reduction (compare below)
 - "Yarn consumption" function: real-time electronic measuring system of the yarn consumption to all feeds (up to 256 max.) at the same time
 - "ATTIVO" electronic brake, which automatically keeps the programmed tension on the yarn: an LGL exclusive (optional)
- Z and/or S rotation, as needed
 - ON/OFF switch, easily accessible
 - Signalling lamp, visible from anywhere around the knitting machine
 - Possibility to be installed in any desired position: Vertical, Inclined or Horizontal

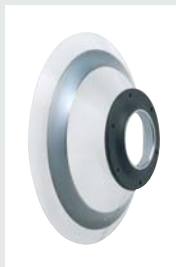
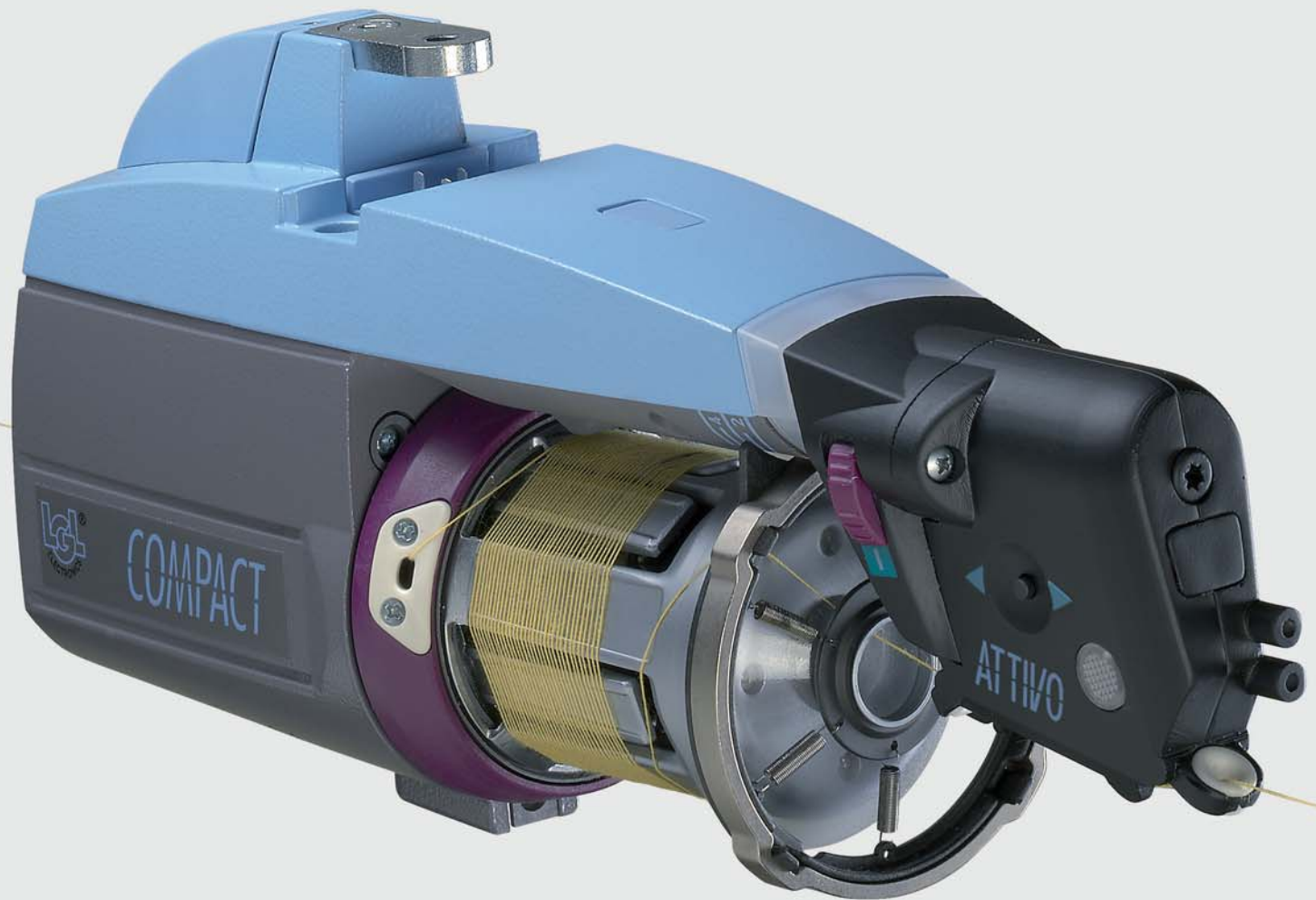
DIMENSIONAL COMPARISON



POWER CONSUMPTION COMPARE



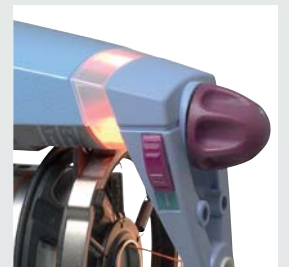
INSTALLATIONS



TWM (LGL patent) with Antiballoon

TWM with lamina

Standard TWM



Signalling lamp

Characteristics:

- Yarn counts: from Den 5 to Den 600
- Speed: up to 700 mt/min

- Fixed separation of windings: 0.9 mm
- Dimensions: Length 240 mm, Width 70 mm, Height 130 mm
- Weight: 1.4 Kg